

# Spot Lights

## LV series

Refer to our website for product details.

CCS LV

Search



You can also use your smartphone or cell phone.

For quick access.

### Provides spot lighting using original converging technology



#### Applications

As a light source for a telecentric lens, light source for inspecting alignment of LCDs or circuit boards, light source for dimension measuring, light source for spot illumination, etc.

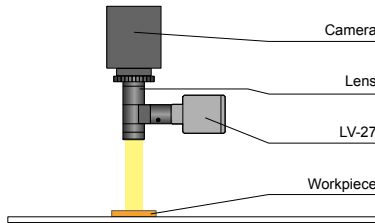
#### Features

Spot Light with tip radius of  $\varnothing 8$  mm and emitting surface of  $\varnothing 6$  mm. Can be used embedded into the coaxial illuminating section of a telecentric lens or macro lens.

We accept custom orders. Please feel free to inquire.

- Shape modifications
- Brightness increases
- Changes in wavelength, etc.

#### Example configuration (LV-27)



#### Lightweight, compact design

With its lightweight and compact design, it doesn't take up much room and is perfect for saving space.

#### Spot Light with low power consumption

The LV series consumes 0.8 W (for red) of power, and can be used for saving energy.

#### Lineup

Model name	LED color	Power consumption	Peak wavelength/ correlated color temperature	Options	Extension cables	Recommended Control Units	Weight
LV-27RD2	Red	24 V / 0.8 W	630 nm	-	<ul style="list-style-type: none"> <li>FCB<sup>22</sup> Straight Cable</li> <li>FCB-W 2-branch Cable</li> <li>FCB-F 4-branch Cable</li> <li>FRCB Robot Cable</li> </ul>	<ul style="list-style-type: none"> <li>PD3</li> <li>CC-ST-1024</li> <li>PSB</li> <li>POD<sup>*1</sup></li> </ul>	40 g
LV-27SW2	White	24 V / 0.4 W	5,500 K				
LV-27BL2	Blue	24 V / 0.4 W	470 nm				
LV-27GR2	Green	24 V / 0.6 W	525 nm				

LED Properties: Spectral Distribution ▶ P.306

Extension Cables ▶ P.296

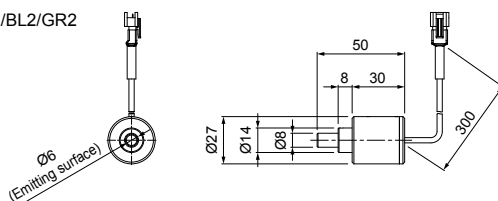
Control Unit Selection Guide ▶ P.243

List of Control Unit Specifications ▶ P.245

\*1 For information on the combination of Light Units and POD-series Control Unit, please refer to our website. <http://www.ccs-grp.com/ink/qr/pod>  
 \*2 The cables with a model name that ends with "-ME2" or "-EL2" are not included.

#### Dimensions (mm)

LV-27RD2/SW2/BL2/GR2



You can change the connectors of the Light Unit cable. Choose between M12 connectors and flying leads. Refer to P.5 for details.

#### Note

- Use as a Spot Light for directly illuminating the workpiece.
- In addition to Light Units with a tip radius of  $\varnothing 8$  mm, we also offer  $\varnothing 10$  mm and  $\varnothing 12$  mm as custom orders.

Various technical documents available.

- PDF Drawings
- DXF Drawings
- 3D CAD
- Instruction Guides
- Product Files
- Imaging Samples
- Data Sheets
- Examples of Custom Ordered Products

Download here. <http://www.ccs-grp.com/dl/>